








KSB Fire Fighting Sets



Fire Competition Market - Standarts

VdS	FM/UL	Acc. NFPA 20	EN 12845	Local Stand.
All components are VdS approved: pumps, Control Panels	All components are selected acc. to NFPA20 and FM/UL approved: pumps, valves, electric motors, diesel engines and Control Panels	All components are selected acc. to NFPA20 without FM/UL approval.	All components are selected acc. to EN12845.	Local regulations are considered. Responsibility of uncertified products belongs to manufacturer.

International Certificates

	NATIONAL PRODUCT CERTIFICATIONS / STANDARDS						
	Germany	France	England	Hungary	Czech Rep.	Poland	USA
	VdS	APSAD/CNPP	LPC	BMOKF	ZUS/Pavus	CNBOP	FM
							
Etanorm- MX	•			•	•	•	
Etanorm- MXN		•		•	•		
Etanorm- RX	•			•	•	•	
Etanorm- RXN		•		•	•		
CPK-SX	•			•	•	•	
Multitec-SX	•			•			
Omega/RDL				•			•
ES							•
Movitec	•			•	•		
UPA	•			•	•	•	
HSC							•



Fire Pumps

Fire Fighting Pump Set

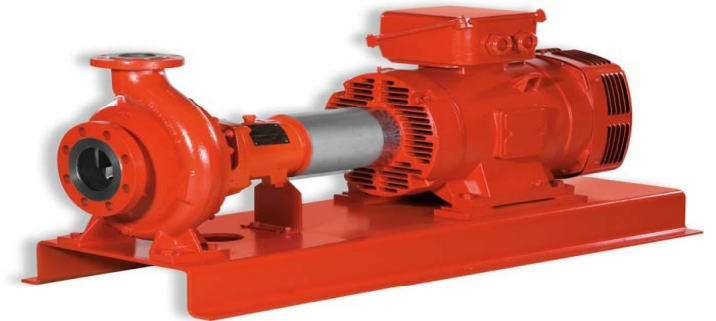
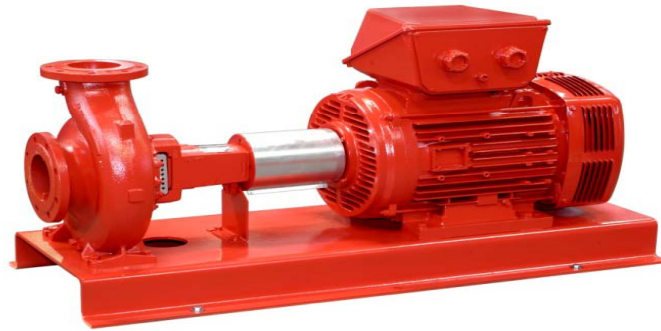
Fire Fighting Pump Group.

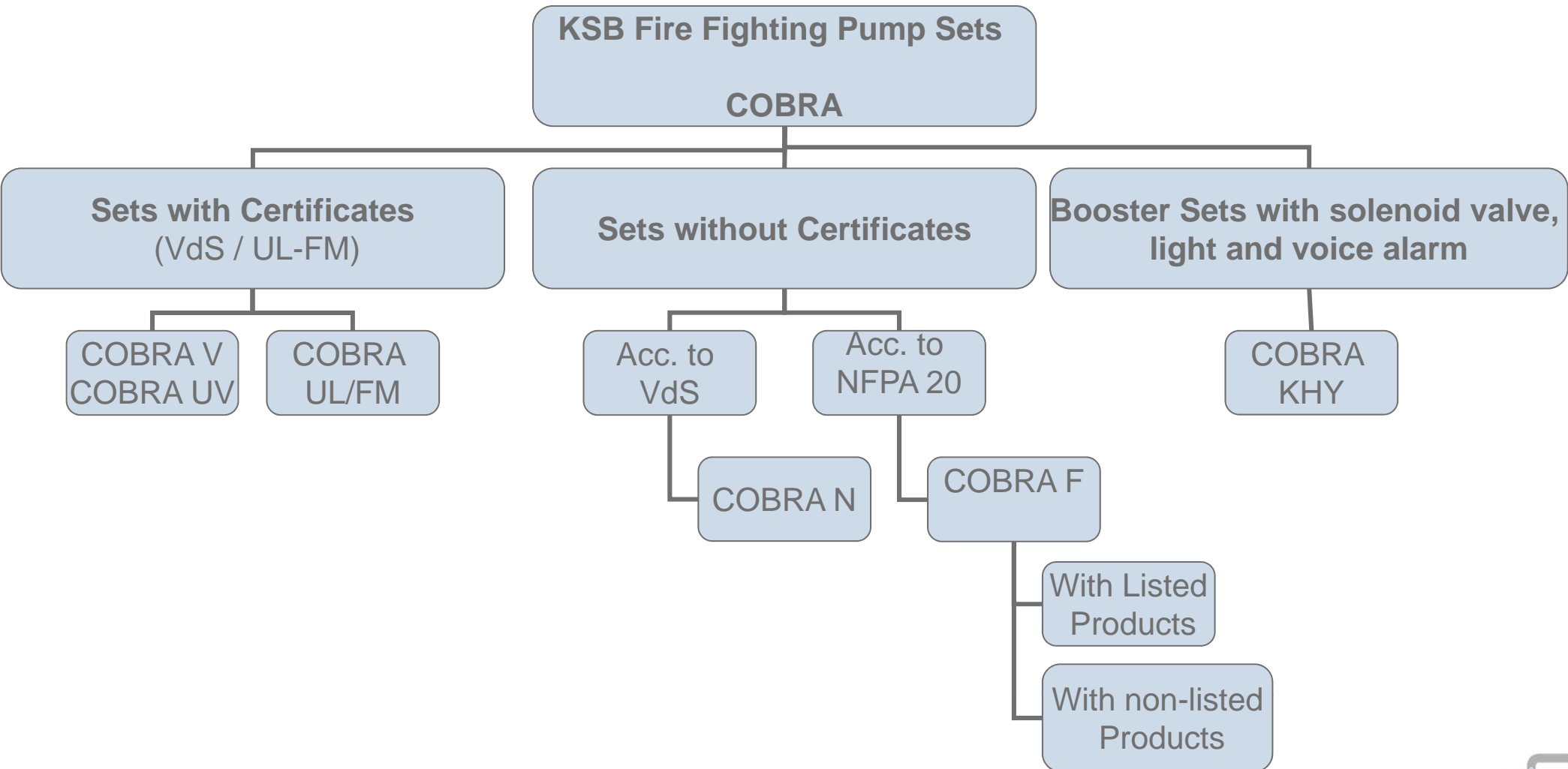
KSB Fire Fighting Products (VdS & Nfpa 20)

Products for Fire Fighting Application;

- Fire Pumps,
- Fire Fighting Pump Sets,
- Fire Fighting Pump Groups.

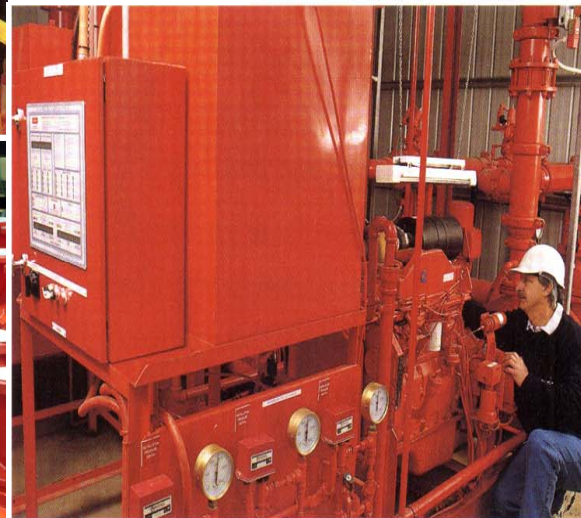
KSB Products





KSB Fire Fighting Pump Sets

- COBRA V
- COBRA UV
- COBRA UL/FM
- COBRA F
- COBRA N
- COBRA KHY





COBRA V

- VdS Approved Fire Fighting Pump sets with VdS certificated products.
- Fire Pumps, Controllers, Pressure Switches are VdS approved.
- Operating Data
 - Maximum Flow: 600 m³/h
 - Maximum Head: 600 mwc



Cobra V Fire Fighting Pump Sets

- Allowable Pump Types

- ETANORM MX (ETNF-FXV)
- ETANORM RX
- CPKN SX
- MULTITEC ASX
- MOVITEC

- All pumps have VdS approval serial no.

- These pumps are designed specifically for sprinler and hydrant systems.

Cobra V Fire Fighting Pump Sets

▪ Electric & Diesel Engine Driven Fire Fighting Pump Sets consist of;

- Pump (Vds Approved – KSB AG)
- Controller are (VdS Approved)
- Pressure Switches (VdS Approved)
- Electric Motors (Siemens IE2-Eff1)
- Diesel Engines (Iveco, Clarke UK etc.)



Electrical Pump Set acc. to VdS



▪ End Suction Fire Pump (VdS)

▪ Control Panel (VdS)

▪ Pressure Switches (VdS)

▪ Jockey Pump (Movitec)

▪ Electric Motor

Diesel Pump Unit acc. to VdS

▪ Fuel Tank

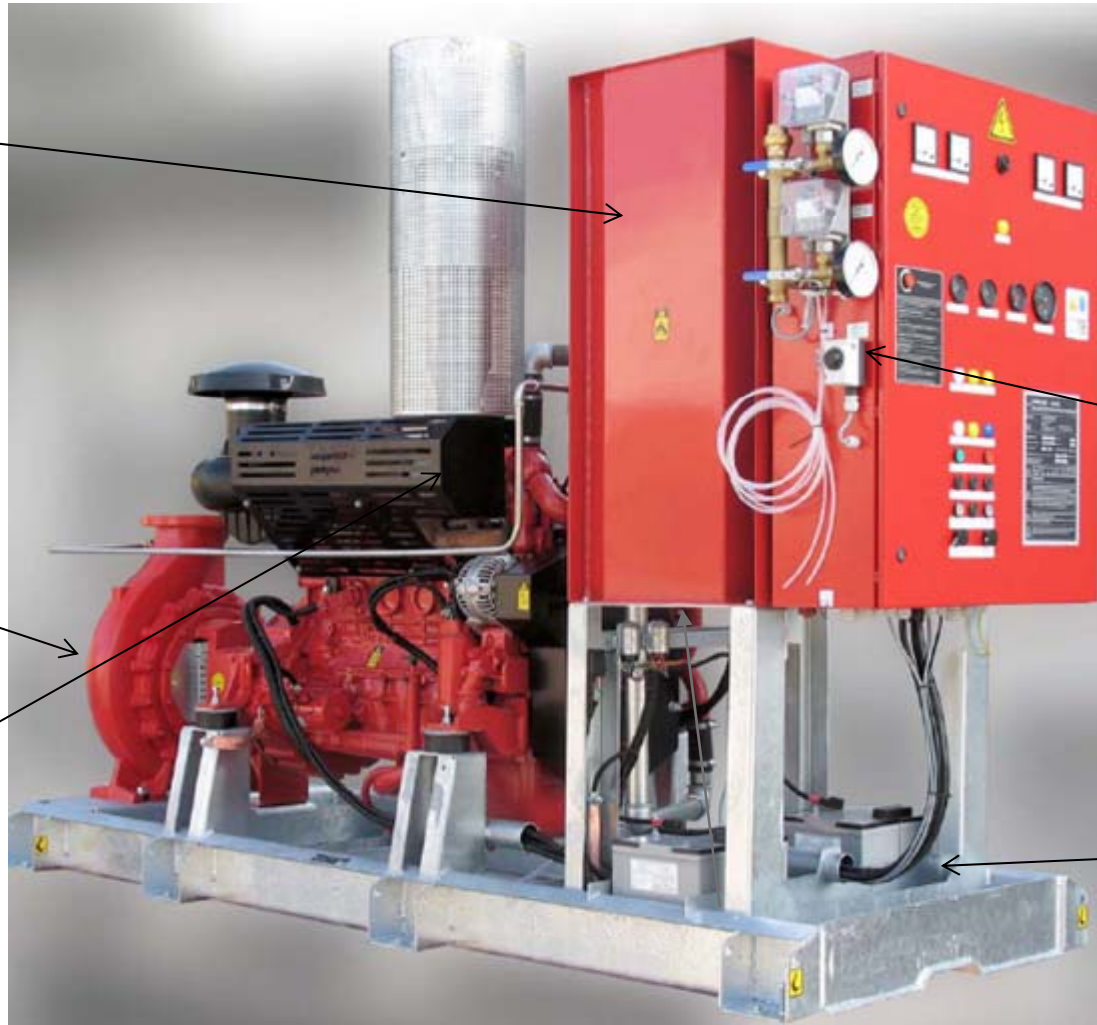
▪ Control Panel (VdS)

▪ End Suction Fire Pump (VdS)

▪ Pressure Switches (VdS)

▪ Diesel Engine

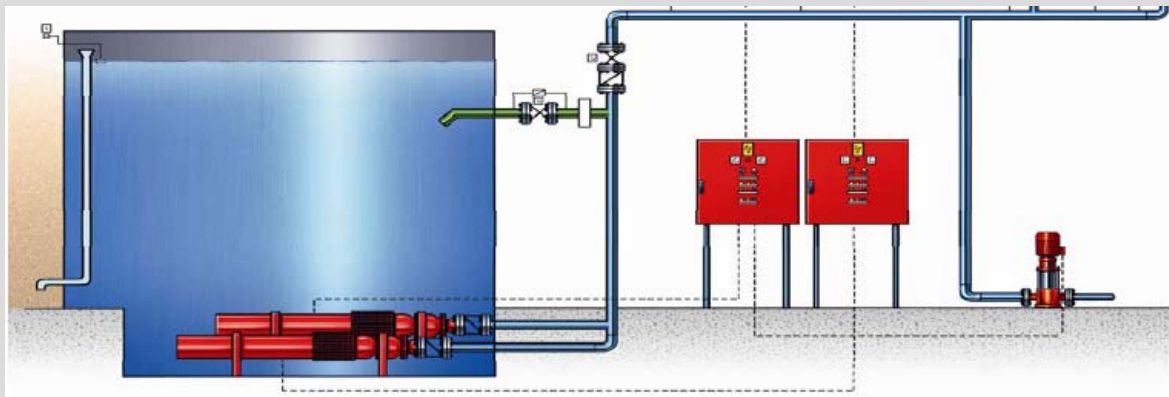
▪ Battery Set





COBRA UV

- VdS Approved Fire Fighting Pump set with VdS certificated submersible pumps.
- Pump Type;
 - UPA



- All pumps have VdS approval serial no.



COBRA UL/FM

- Fire Fighting Pump sets with UL/FM certificated products.
- Fire Pumps, Controllers Diesel Engines are UL/FM approved.
- Operating Data
 - Maximum Flow: 3000 Gpm
 - Maximum Head: 236 Psi



Cobra UL/FM Fire Fighting Pump Sets

▪ Allowable Pump Types

- End Suction (ES – Armstrong Pump)
- Horizontal Split Case (HSC – Armstrong Pump)
- Vertical Turbine (VTF – Armstrong Pump)

▪ These pumps are UL Listed / FM Approved and designed specifically for sprinkler and hydrant systems.





Cobra UL/FM Fire Fighting Pump Sets

- **Electric Pump Sets consist of;**

- Pumps (UL/FM – Armstrong Pump)
- Controllers are UL/FM (Tornatec)
- Electric Motors (Siemens IE2-Eff1)

(Nema MG1 - UL Listed upon request)

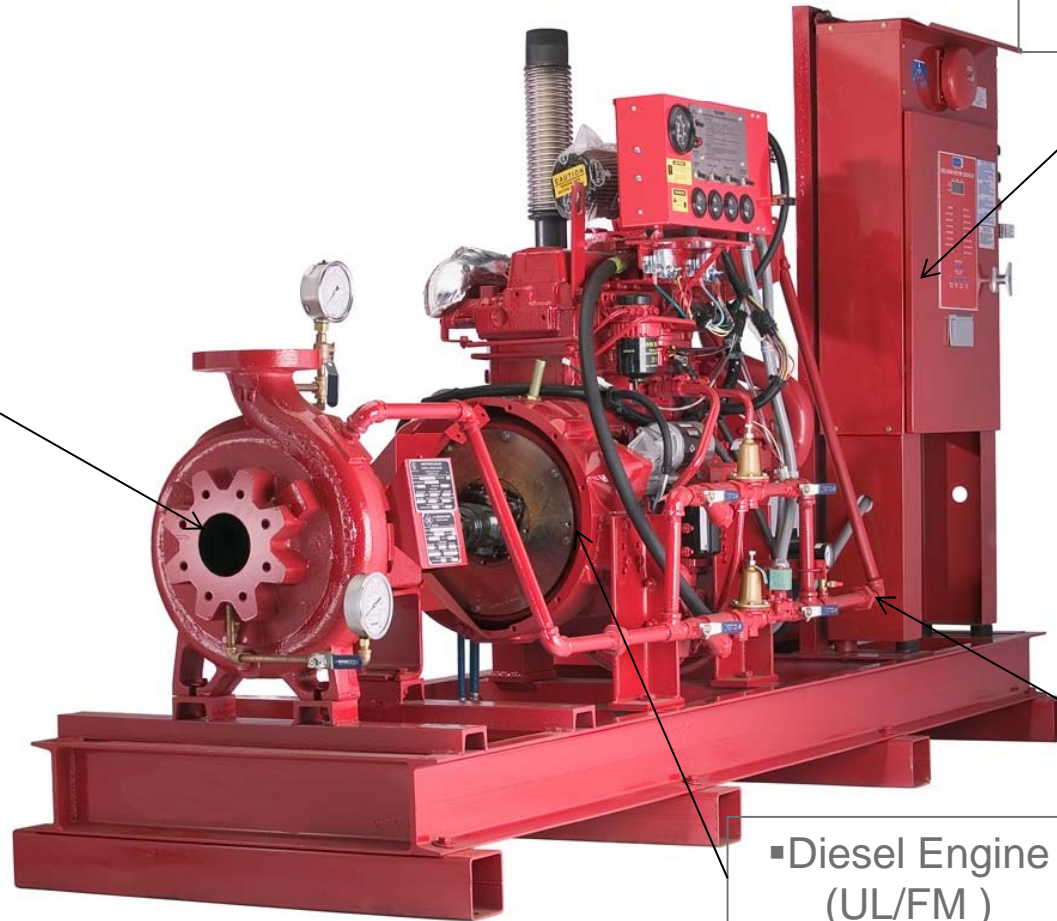
- **Diesel Pump Sets consist of;**

- Pumps (UL/FM – Armstrong Pump)
- Controllers (UL/FM - Tornatech)
- Diesel Engines (UL/FM - Clarke UK/USA)

COBRA UL/FM - Fire Fighting Pump Sets

▪End Suction Fire Pump
(UL/FM)

▪Control Panel
(UL/FM)



▪Battery Set

▪Diesel Engine
(UL/FM)



COBRA N

- KSB non-listed Fire Fighting Pump Sets (acc. to VdS);
- Pump Sets consist of KSB Pumps
- Operating Data
 - Maximum Flow: 600 m³/h
 - Maximum Head: 600 mwc

Cobra N Fire Fighting Pump Sets



▪ Allowable Pump Types

- BETA – MEGA – WKL
- ETANORM RM / MXN - (ETNF-FXA)
- CPK N
- MULTITEC
- UPA
- MOVITEC Etc.

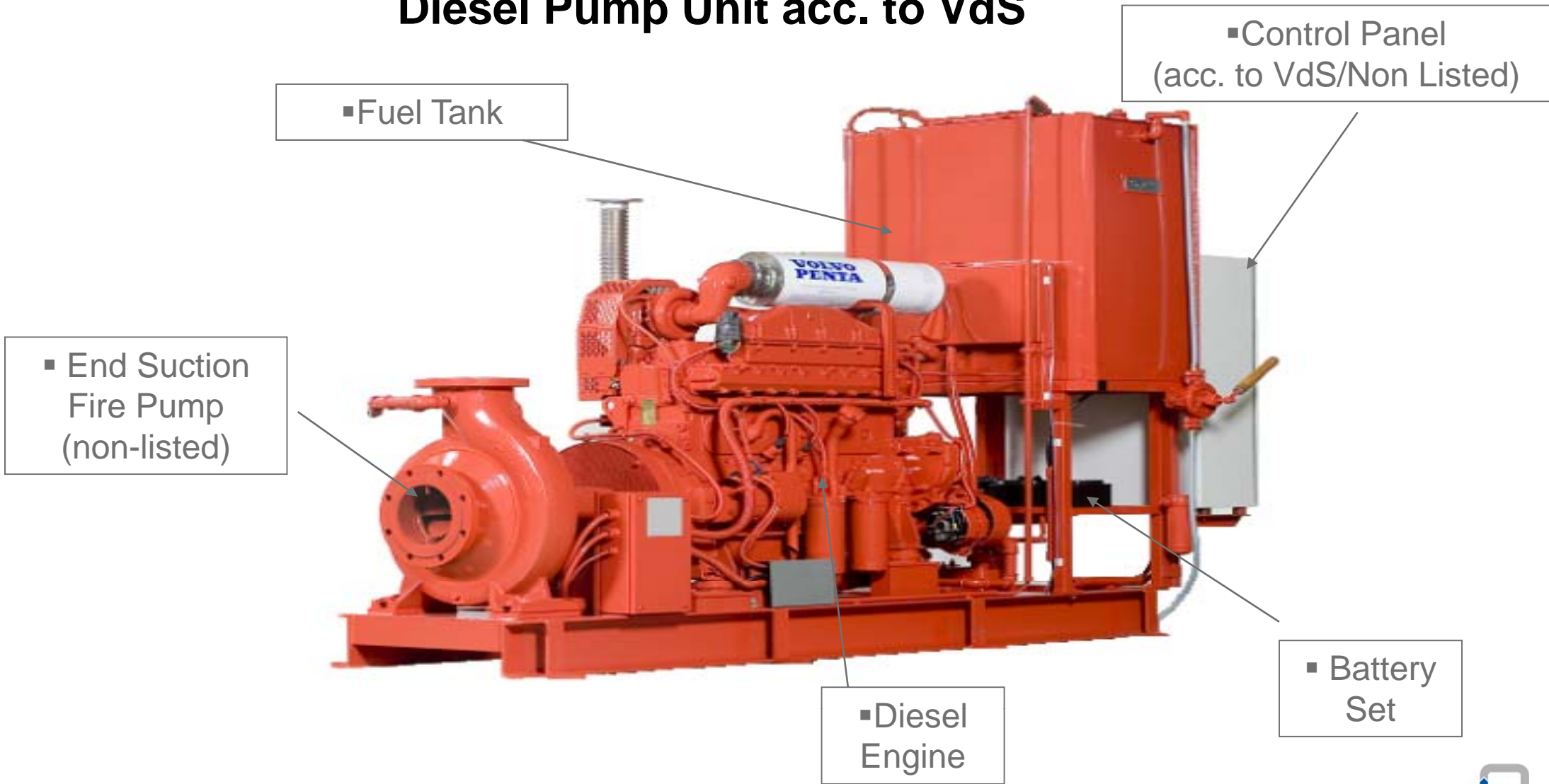


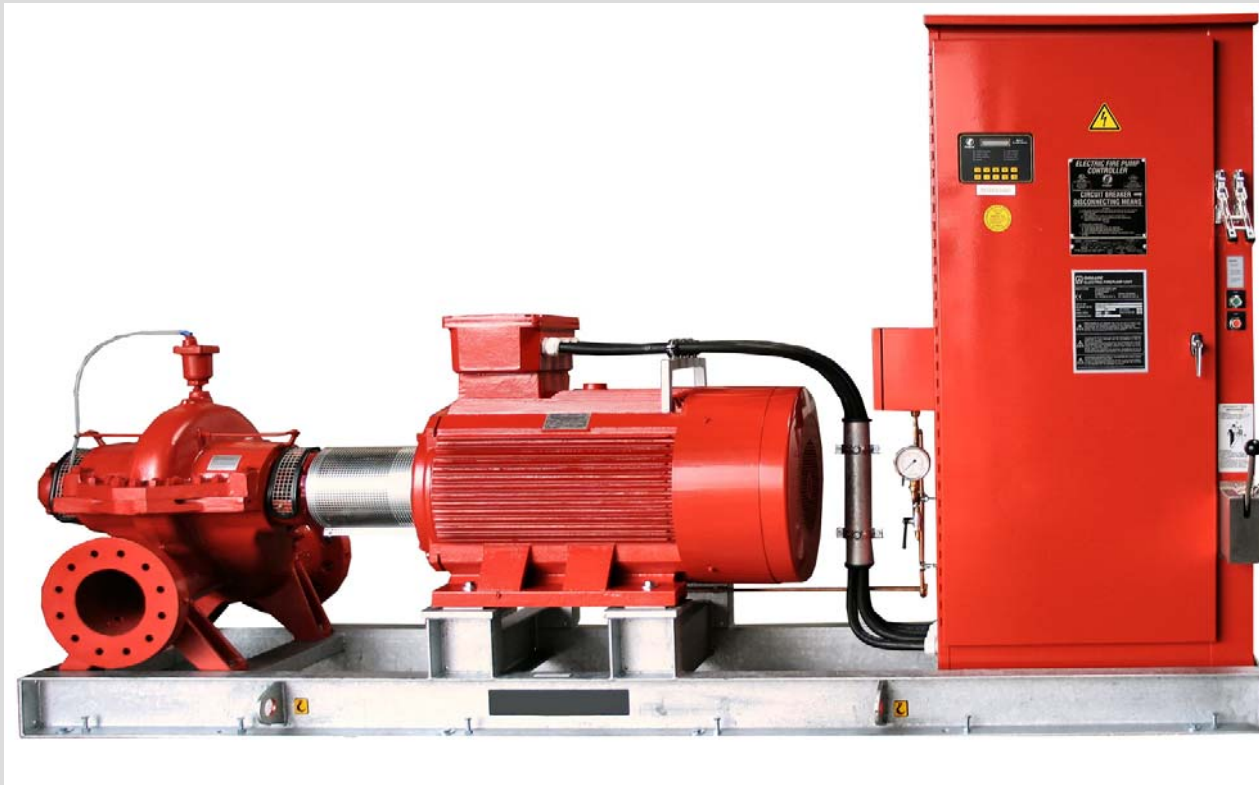
Cobra N Fire Fighting Pump Sets

- Electric & Diesel Engine Driven Fire Fighting Pump Sets consist of;
 - Pumps (Non-Listed – KSB Pumps)
 - Controllers are (Local Manufacturer – Acc. to VdS Standards)
 - Pressure Switches (Non-Listed)
 - Electric Motors (Siemens IE2-Eff1)
 - Diesel Engines (Hatz, Iveco, Clarke UK etc.)



Diesel Pump Unit acc. to VdS





COBRA F

- KSB Fire Fighting Pump Sets acc. to NFPA 20;
- Pump Sets consist of KSB Pumps
- Operating Data
 - Maximum Flow: 600 m³/h
 - Maximum Head: 600 mwc

Cobra F Fire Fighting Pump Sets

▪ Allowable Pump Types

- BETA – MEGA – WKL
- ETANORM RM / MXN - (ETNF-FXA)
- CPK N
- MULTITEC
- OMEGA
- UPA
- MOVITEC Etc.





Cobra F Fire Fighting Pump Sets

- **Electric & Diesel Engine Driven Fire Fighting Pump Sets consist of;**
 - Pump (Non-Listed & Listed KSB Pumps upon customer request)
 - Controller (Tornatech – Acc. to NFPA 20 Standards / Non-Listed)
 - Electric Motor (Siemens IE2-Eff1)
 - Diesel Engine (Hatz, Iveco, Clarke UK etc.)

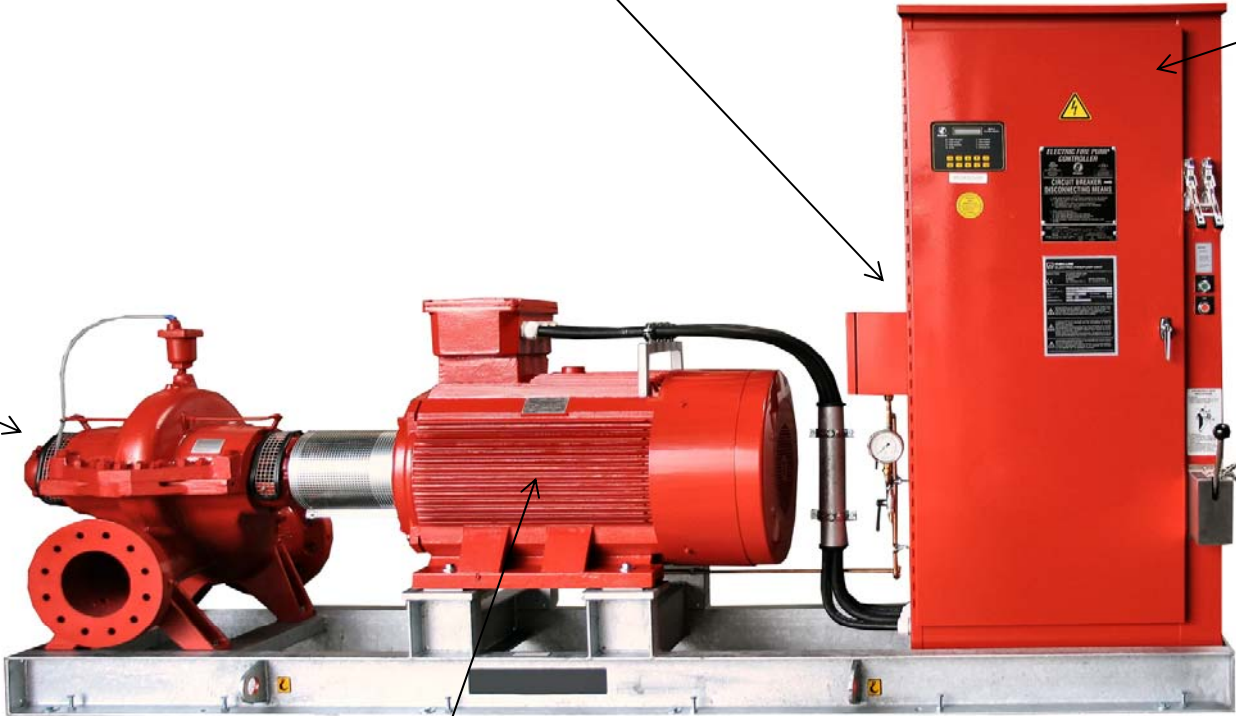
- Selected pumps shall comply with NFPA 20 Pump curve rules

Electric Fire Pump Set acc. to NFPA 20

▪ Pressure Transducer

▪ Control Panel

▪ Horizontal Split-case Fire pump



▪ Electric Motor



COBRA KHY

- KSB Booster Sets for Fire Fighting Application.

Cobra KHY Fire Fighting Pump Sets



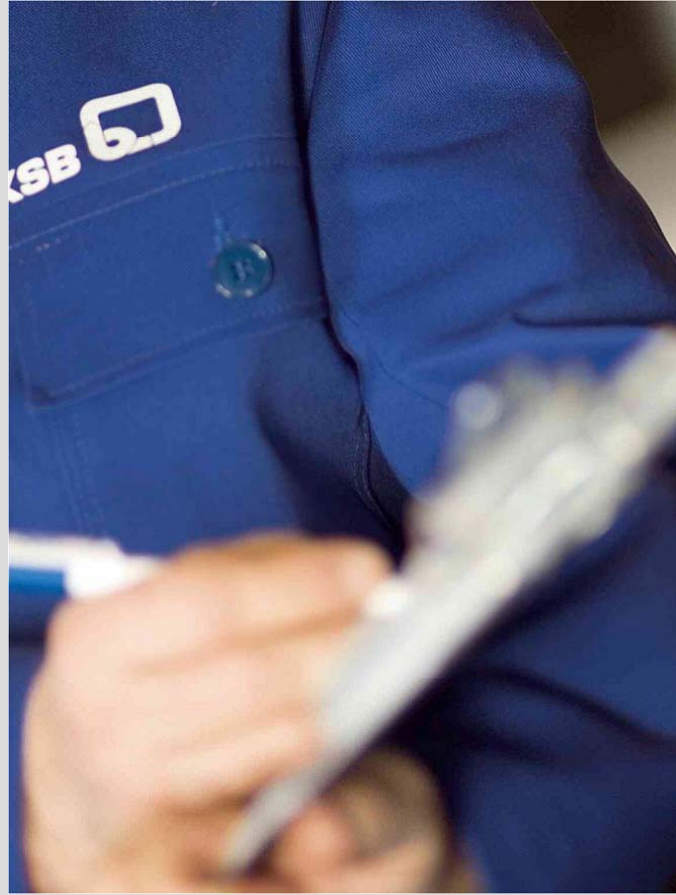
- KSB Booster Sets consist of;
 - Pumps (Non-Listed – DP Pumps Movitec)
 - Controller (Booster Control)
 - Suction discharge collectors
 - Suction valves
 - Discharge valves and check valves
 - Solenoid Valve
 - Voice & Light Alarm



JOCKEY PUMP

- Vertical, multistage pump is used as Jockey pump to cover little pressure losses in the system.
- Pump Type;
 - Movitec

Commissioning and Periodic Maintenance



- Commissioning of Fire Fighting Pump sets are carried out free of charge by KSB Center services in Turkiye
- 24/7 Service possibility to all parts of the country